

GIFT CARD HOLDER

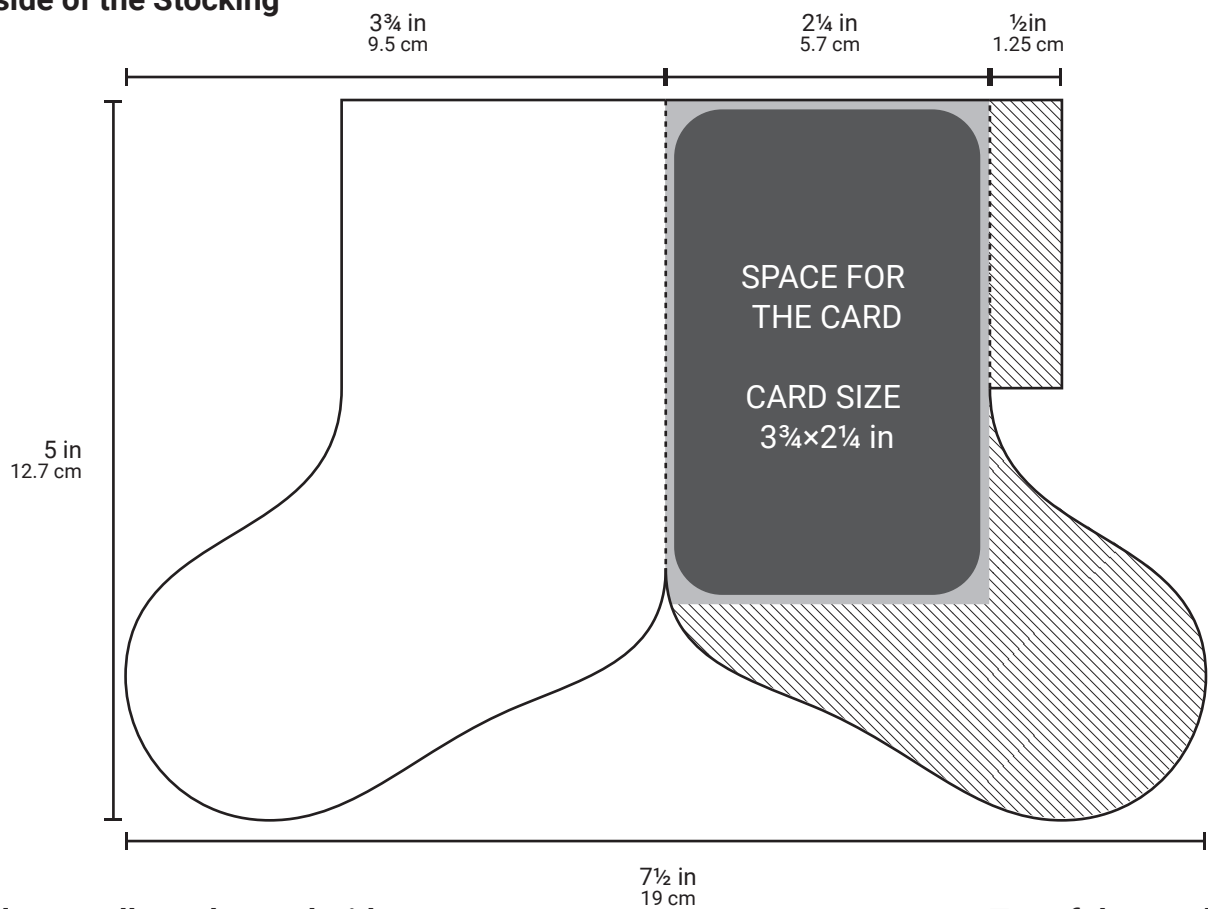
Instructions

It is easier to fuzzy cut the stockings if you score them in the middle first, fold it and cut through two layers of paper at once. Be careful not to cut the flap off that will be glued.

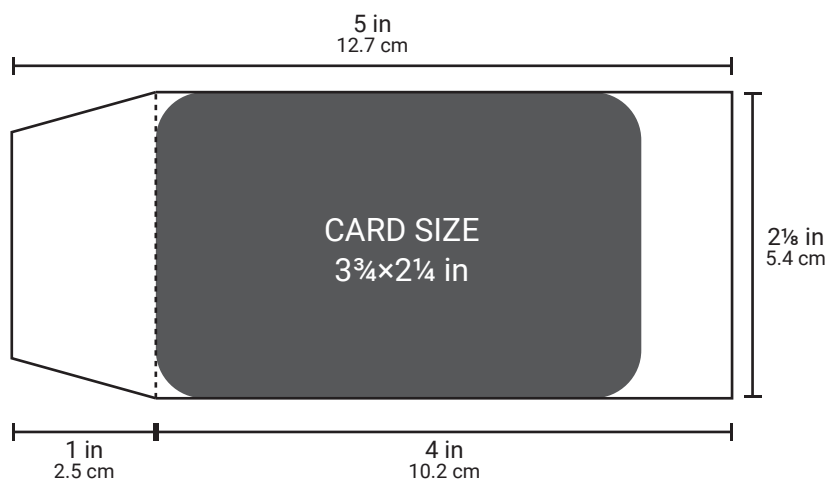
- Cut
- - - - - Fold
- ////// Glue

Images on this page are scaled to 75%!
Sizes in cm are approximations!

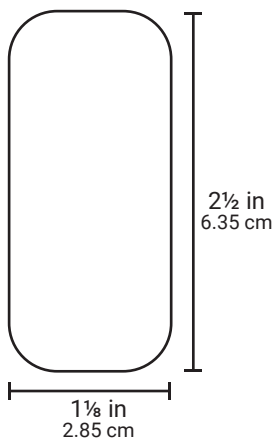
Outside of the Stocking



Holder to pull out the card with



Top of the stocking



GIFT CARD HOLDER

Instructions

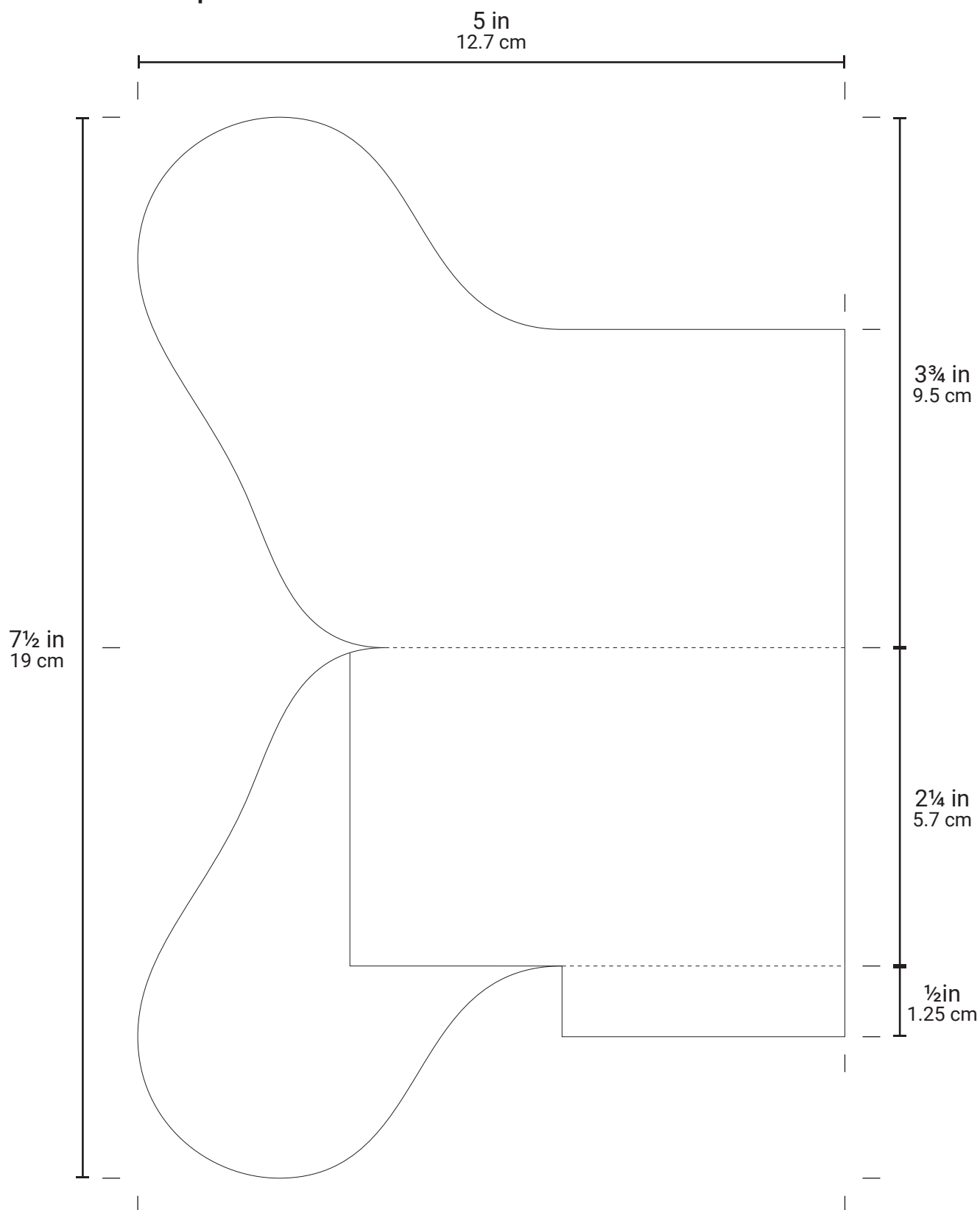
Print out page 3 of this document to get a 100% scale version of the stocking gift card holder.

1. Fold the template in half to fuzzy cut both sides of the stocking at once. Makes it easier to get an even result.
2. Be careful not to cut the flap on the side that will be used to glue both sides together. Fold that flap.
3. Cover the entire side flap with glue and the marked area on one side of the stocking. I used a piece of paper to cover up the part that will not be glued.
4. Fold the stocking together and let the glue dry.
5. To make it easy to remove the gift card, you can create a slider by which to pull it out. Fold about 1 in from the bottom to put the gift card in and slide it into the stocking.
6. Cut out the top of the stocking in the proper size (you can make it bigger). You can either cut the rounded corners by hand or use a quarter corner punch.
7. You can either glue this to the back of the card holder and remove the gift card backwards later or use some foam tape to raise it above the stocking and be able to pull the gift card out forwards.
8. Decorate the stocking to your liking. You can use stickers, stamps, embossing or other items.



GIFT CARD HOLDER

100% size of the template.



GIFT CARD HOLDER

100% size of the template.

