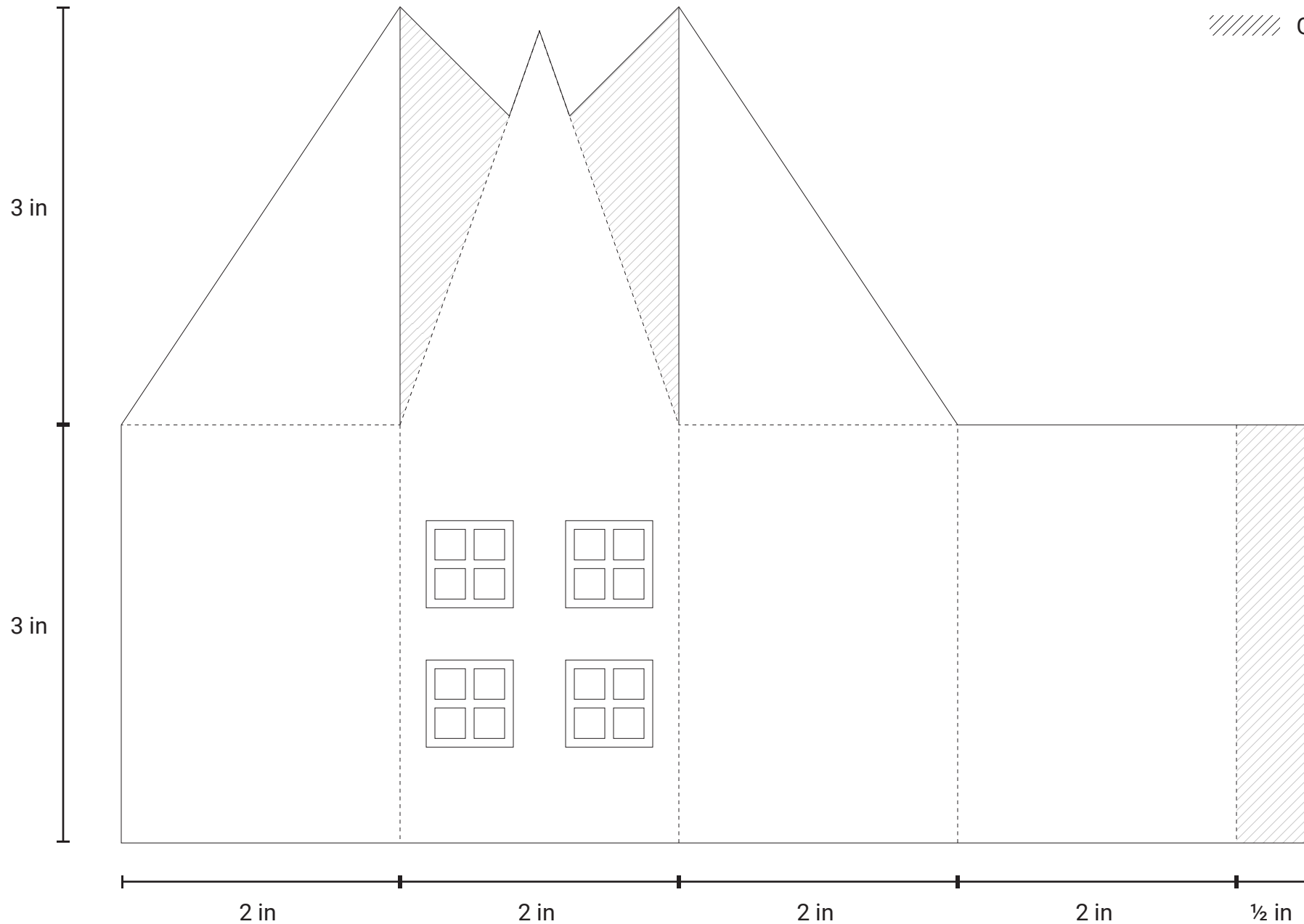


# TEALIGHT HOUSES

Papersize 8 1/2 in x 6 in

- Cut
- - - - Fold
- //// Glue



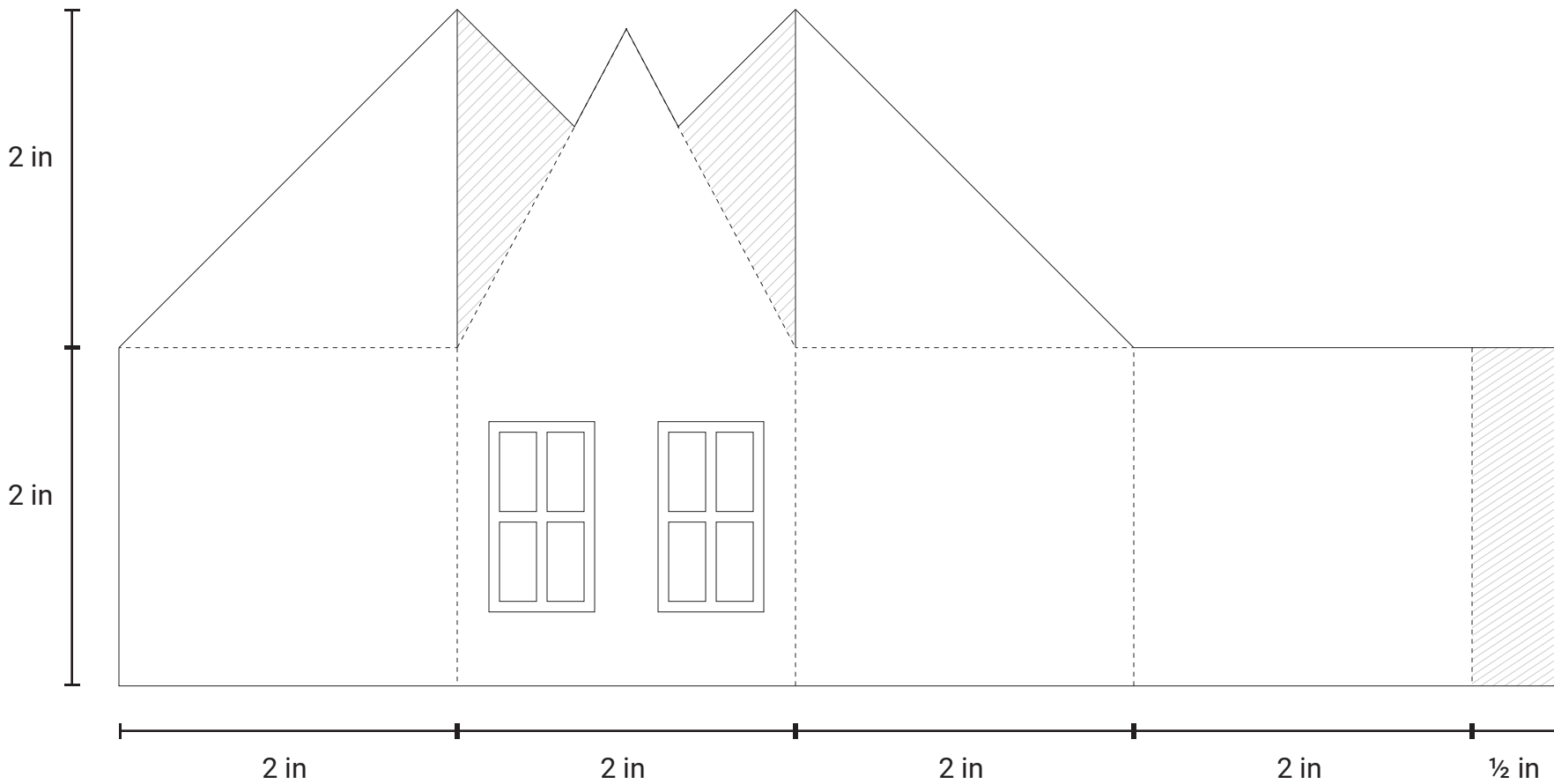
For more information and free downloads, visit:  
[ANNEELSTER.COM](http://ANNEELSTER.COM)



# TEALIGHT HOUSES

Papersize 8 ½ in × 4 in

- Cut
- - - - Fold
- //// Glue



# TEALIGHT HOUSES

## Information

You can either print the templates out or use a ruler or scoring board to measure the sizes.

You need: ruler and/or scoring board, pencil, thick cardstock, transparent paper, glue

If you are unsure about the safety of these houses you can use electric tealights instead.

If you are using bright cardstock, be sure to remove all pencil lines. Especially if you drew in the windows, you must erase all pencil before glueing on the transparent paper or the pencil marks will be visible once lit.

## Instructions

1. Start by cutting your cardstock to the according size.
2. Score on the longer side at the 2 in, 4 in, 6 in, 8 in and 8 ½ in.
3. Score on the shorter side at 2 or 3 in, but only the first and last two quarters of the paper. Leave the house front without a score mark.
4. Cut the front side of the roofs up to the middle of the paper. Then cut diagonally across the roof and remove all unnecessary pieces of paper.
5. Cut out the windows
6. Fold the side roofs at the top of the sides of the house and all sides of the house
  6. a. If you have not printed out the template you need to measure the tip of the front roof using the sides of the roof. It helps to draw in a faint guideline in the middle of the housefront to find the right spot.
  6. b. You could also use a ruler to measure 2 or 3 in from the corner of the house towards the guideline in the center and mark the spot.
  6. c. Cut off the excess paper on the top of the roof front.
7. Fold the sides of the roof front to create flaps.
8. Glue transparent paper, cut with padding, behind the windows.
9. Glue the sides of the roof onto the flaps of the roof front. In case the flaps exceed the size of the roof sides, simply cut them off.
10. Glue the ½ in flap from the right side onto the left side of the house.
11. Light a tealight and carefully place the house on top.

